



**PRODUCT SPECIFICATION SHEET**

**Cp-Ti Grade 1  
-15 μm/+45 μm**

**CHEMICAL COMPOSITION:**

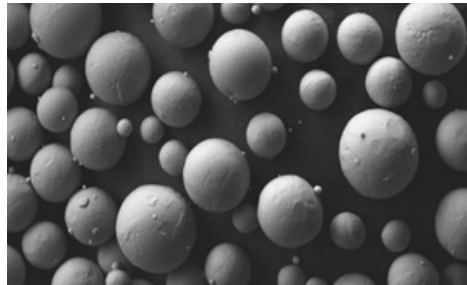
Element	Typical Gr. 1 (% wt.)
Carbon, max	0.08
Oxygen, max	0.18
Nitrogen, max	0.03
Hydrogen, max	0.015
Iron, max	0.20
Other each, max	0.10
Other total, max	0.40

**APPARENT DENSITY:**

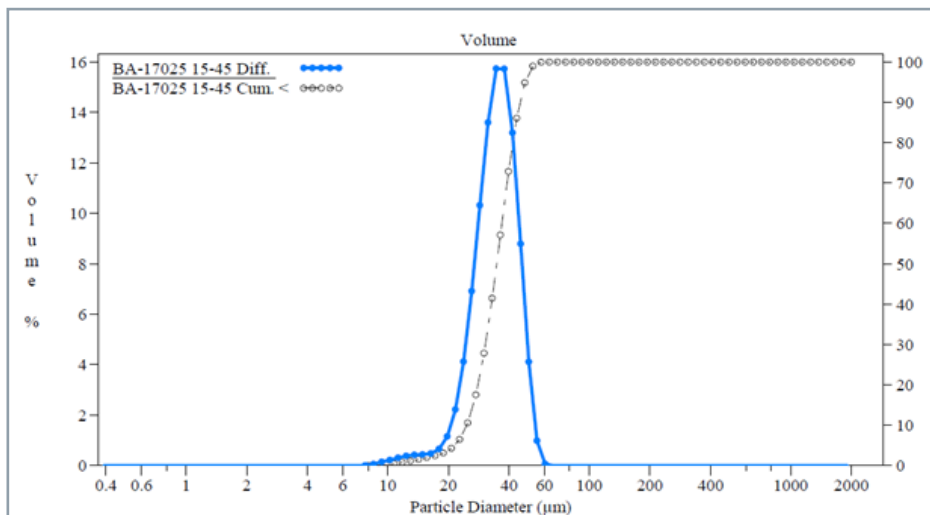
2.47-2.54 g/cm<sup>3</sup>

**HALL FLOWMETER:**

28-31 s



**PARTICLE SIZE DISTRIBUTION (LASER DIFFRACTION):**



**d10: 22 μm-28 μm • d50: 34 μm-38 μm • d90: 44 μm-48 μm**



**PLASMA ATOMIZED**

**IDEAL FOR ADDITIVE  
MANUFACTURING**

**EXCELLENT FLOWABILITY**

**HIGHLY SPHERICAL**

**HIGH PACKING DENSITY**

**LOW POROSITY**

**LITTLE TO NO SATELLITES**

**HIGH CHEMICAL PURITY**

**TSXV: PYR • OTCQB: PYRNF**

For more information, please contact:

**Business Development Department  
PyroGenesis Additive**

[powders@pyrogenesis.com](mailto:powders@pyrogenesis.com)

T. +1 (514) 937-0002

F. +1 (514) 937-5757

© 2018, PYROGENESIS ADDITIVE  
THE DRAWINGS AND INFORMATION DEPICTED HEREIN ARE PROPRIETARY TO PYROGENESIS ADDITIVE THEY MAY NOT BE COPIED, REPRODUCED, TRANSMITTED, DISCLOSED, SOLD, ALTERED OR OTHERWISE USED IN WHOLE OR IN PART IN ANY MANNER WHATSOEVER, INCLUDING AS BASIS FOR DESIGN, MANUFACTURE OR SALE OF PRODUCTS, WITHOUT PRIOR WRITTEN CONSENT OF PYROGENESIS ADDITIVE.