

**PRODUCT SPECIFICATION SHEET**  
**Ti-6Al-4V Grade 23**  
**-53  $\mu\text{m}$ /+20  $\mu\text{m}$**

**CHEMICAL COMPOSITION:**

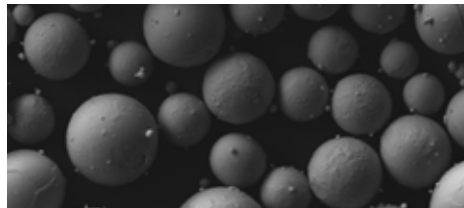
Element	Typical Gr. 23 (% wt.)
Titanium	Balance
Aluminum	5.50 - 6.50
Vanadium	3.50 - 4.50
Carbon	< 0.08
Oxygen	< 0.13
Nitrogen	< 0.03
Hydrogen	< 0.0125
Iron	< 0.25
Other each, max	0.10
Other total, max	0.40

**APPARENT DENSITY:**

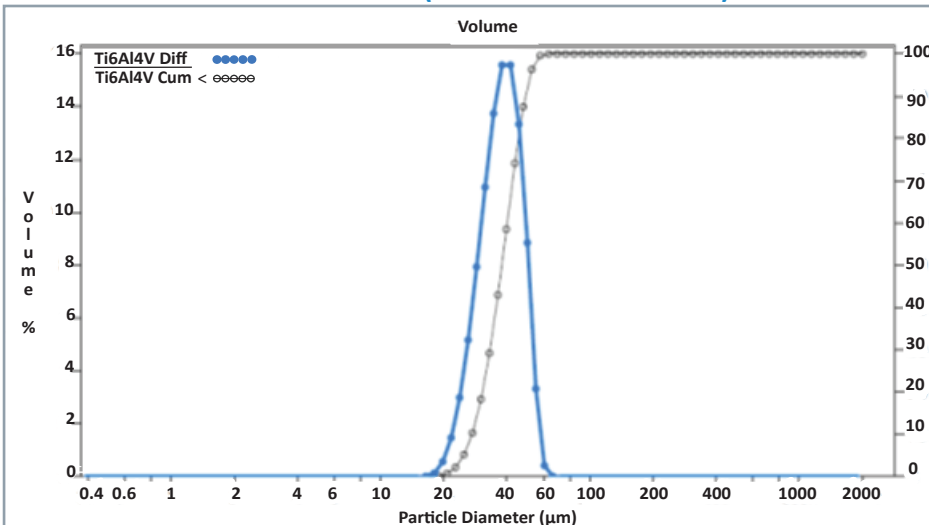
2.47-2.56 g/cm<sup>3</sup>

**HALL FLOWMETER:**

28-32 s



**PARTICLE SIZE DISTRIBUTION (LASER DIFFRACTION):**



**d10: 25  $\mu\text{m}$ -29  $\mu\text{m}$  • d50: 37  $\mu\text{m}$ -40  $\mu\text{m}$  • d90: 49  $\mu\text{m}$ -53  $\mu\text{m}$**



**PLASMA ATOMIZED**

**IDEAL FOR ADDITIVE  
MANUFACTURING**

**EXCELLENT FLOWABILITY**

**HIGHLY SPHERICAL**

**HIGH PACKING DENSITY**

**LOW POROSITY**

**FEW SATELLITES**

**HIGH CHEMICAL PURITY**

**TSX: PYR • NASDAQ: PYR**  
**• FRA: 8PY**

For more information, please contact:

**Business Development Department**  
**PyroGenesis Additive**

[powders@pyrogenesis.com](mailto:powders@pyrogenesis.com)

T. +1 (514) 937-0002

F. +1 (514) 937-5757

© 2021, PYROGENESIS ADDITIVE  
 THE DRAWINGS AND INFORMATION DEPICTED HEREIN ARE PROPRIETARY TO PYROGENESIS ADDITIVE THEY MAY NOT BE COPIED, REPRODUCED, TRANSMITTED, DISCLOSED,  
 SOLD, ALTERED OR OTHERWISE USED IN WHOLE OR IN PART IN ANY MANNER WHATSOEVER, INCLUDING AS BASIS FOR DESIGN, MANUFACTURE OR SALE OF PRODUCTS,  
 WITHOUT PRIOR WRITTEN CONSENT OF PYROGENESIS ADDITIVE.