



**PRODUCT SPECIFICATION SHEET**

**In-718**  
**-90 μm/+45 μm**

**CHEMICAL PROPERTIES:**

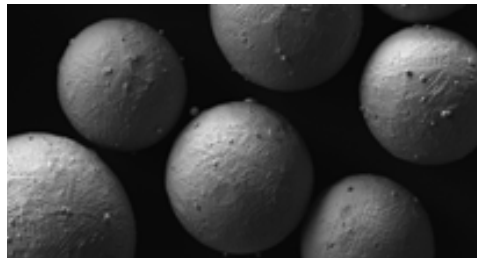
Element	Typical 718 (% wt.)	Element	Typical 718 (% wt.)
Aluminum	0.61	Niobium	5.14
Bore	<0.005	Nickel	54.17
Cobalt	0.17	Phosphorus	0.005
Carbon	0.02	Sulfur	< 0.001
Oxygen	0.01	Silicon	0.07
Nitrogen	0.01	Titanium	0.97
Hydrogen	0.0004	Vanadium	0.04
Iron	18.15	Tungsten	0.03
Manganese	0.07	Copper	0.04
Chromium	17.6	Molybdenum	2.89

**APPARENT DENSITY:**

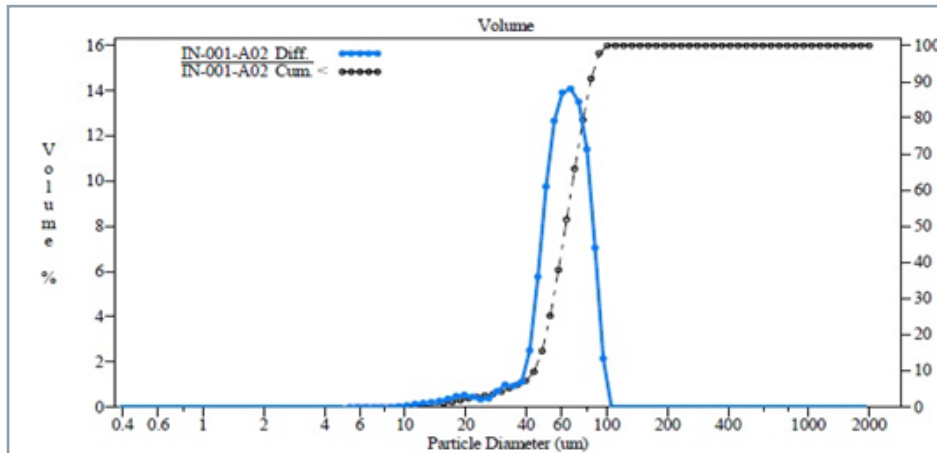
4.65 - 4.80 g/cm<sup>3</sup>

**HALL FLOWMETER:**

12-14 s



**PARTICLE SIZE DISTRIBUTION (LASER DIFFRACTION):**



**d10: 42 μm-46 μm • d50: 60 μm-65 μm • d90: 85 μm-90 μm**



**PLASMA ATOMIZED**

**IDEAL FOR ADDITIVE MANUFACTURING**

**EXCELLENT FLOWABILITY**

**HIGHLY SPHERICAL**

**HIGH PACKING DENSITY**

**LOW POROSITY**

**FEW SATELLITES**

**HIGH CHEMICAL PURITY**

**TSX: PYR • NASDAQ: PYR**  
**• FRA: 8PY**

For more information, please contact:

**Business Development Department**  
**PyroGenesis Additive**

[powders@pyrogenesis.com](mailto:powders@pyrogenesis.com)

T. +1 (514) 937-0002

F. +1 (514) 937-5757

© 2021, PYROGENESIS ADDITIVE  
THE DRAWINGS AND INFORMATION DEPICTED HEREIN ARE PROPRIETARY TO PYROGENESIS ADDITIVE THEY MAY NOT BE COPIED, REPRODUCED, TRANSMITTED, DISCLOSED, SOLD, ALTERED OR OTHERWISE USED IN WHOLE OR IN PART IN ANY MANNER WHATSOEVER, INCLUDING AS BASIS FOR DESIGN, MANUFACTURE OR SALE OF PRODUCTS, WITHOUT PRIOR WRITTEN CONSENT OF PYROGENESIS ADDITIVE.