



PRODUCT SPECIFICATION SHEET

**Cp-Ti Grade 1
-25 μm/+5 μm**

CHEMICAL COMPOSITION:

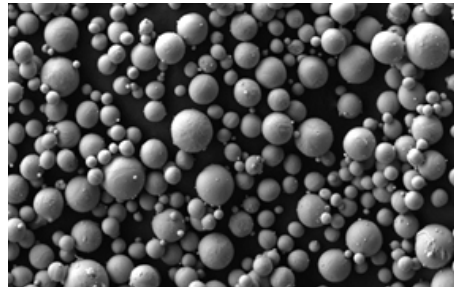
Element	Typical Gr. 1 (% wt.)
Carbon, max.	0.08
Oxygen, max.	0.18
Nitrogen, max.	0.03
Hydrogen, max.	0.015
Iron, max.	0.20
Other each, max.	0.10
Other total, max.	0.40

APPARENT DENSITY:

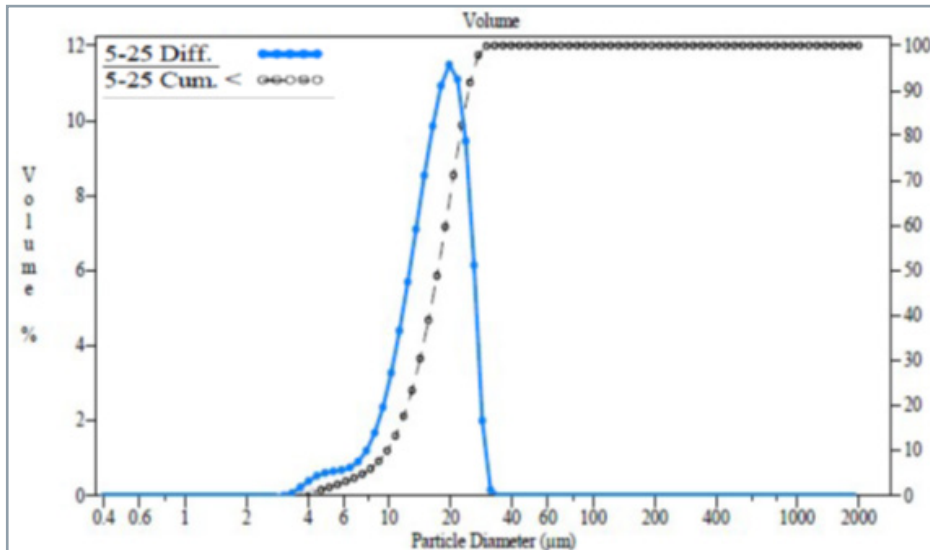
N.A.

HALL FLOWMETER:

NONE



PARTICLE SIZE DISTRIBUTION (LASER DIFFRACTION):



d10: 8 μm-16 μm • d50: 17 μm-22 μm • d90: 24 μm-27 μm



PLASMA ATOMIZED

**IDEAL FOR ADDITIVE
MANUFACTURING**

EXCELLENT FLOWABILITY

HIGHLY SPHERICAL

HIGH PACKING DENSITY

LOW POROSITY

LITTLE TO NO SATELLITES

HIGH CHEMICAL PURITY

TSX: PYR • OTCQB: PYRNF

For more information, please contact:

**Business Development Department
Pyrogenesis Additive**

powders@pyrogenesis.com

T. +1 (514) 937-0002

F. +1 (514) 937-5757

© 2018, PYROGENESIS ADDITIVE
THE DRAWINGS AND INFORMATION DEPICTED HEREIN ARE PROPRIETARY TO PYROGENESIS ADDITIVE THEY MAY NOT BE COPIED, REPRODUCED, TRANSMITTED, DISCLOSED, SOLD, ALTERED OR OTHERWISE USED IN WHOLE OR IN PART IN ANY MANNER WHATSOEVER, INCLUDING AS BASIS FOR DESIGN, MANUFACTURE OR SALE OF PRODUCTS, WITHOUT PRIOR WRITTEN CONSENT OF PYROGENESIS ADDITIVE.